

Schedule and
ABSTRACTS OF PAPERS
CONFERENCE ON
NEW RESEARCH IN ORGONOMY
1 - 2 August 2009

Held at the
[Orgone Biophysical Research Lab](#)
Ashland, Oregon, USA

<http://www.orgonomyconference.org>

Presentation Schedule
Conference on NEW RESEARCH IN ORGONOMY

FRIDAY, July 31st - 6:00 PM - 9:00 PM – Informal Open House and Social at the Orgone Biophysical Research Lab (OBRL)

SATURDAY, August 1st

9:30 AM Registration for late-arrivals

10:00 - 10:10 AM Introduction: *Welcome to OBRL and the New Research in Orgonomy presentations*

10:10 - 11:10 AM Tom DiFerdinando: *Acute Armor and the Facade: An Orgone-Energetic Investigation into Psychological Tension*

5 minute stretch break

11:15 - 12:15 AM James DeMeo, PhD: *Sahasia Since 1900: Contemporary Demographic Data on Sexuality, Child-Treatment, Women's Status and Social Freedoms Matches the Cross-Cultural Data, with a note on Modern Islamic Empire and Terrorism*

5 minute stretch break

Pre-Lunch Demonstration of Orgone Energy Apparatus (to be announced)

Lunch Break, 1:00 to 2:30 PM

2:30- 3:30 PM Morgaan Sinclair: *Childhood's End: Mende, Hopi, and Trobriand Initiation*

5 minute stretch break

3:35 - 4:35 PM Eric Gault: *The Forced Commingling of Musical Cultures in Colonial Latin America; a Reichian Perspective*

5 minute stretch break

4:40 – 5:40 PM - Armando Vecchietti: *Personal Experiences with the Orgone Energy Accumulator and Reich Blood Test in a Clinical Practice*

Dinner Break

8:00 PM - 9:30 PM – Optional Evening Events: VIDEO *Man's Right to Know* (with permission of the producer, Kevin Hinchey). Copies can be purchased from the Wilhelm Reich Museum Bookstore. www.wilhelmreichmuseum.org Also: Visits to the Orgone Energy Darkroom and Observatory may be possible (weather permitting)

Additional Saturday Talk (not on original schedule):

Mary Lou MacIlvaine, Ph.D: *Sexuality and the Functioning of Life*

SUNDAY, August 2nd

10:00 - 10:10 AM *Announcements*

10:10 - 11:40 AM Richard Blasband, MD: *The Orgone Energy Accumulator and Healing by Intention in the Treatment of Cancer in Mice: A Functional Identity, and Mass-free Orgone Energy and Consciousness*

5 minute stretch break

11:45 -1:00 PM Roberto Maglione, MSc, BPharm. and Diego Serena, BPharm: *On the Effect of a Cosmic Energy on Chemical Systems*

Lunch Break, 1:00 to 2:30 PM

2:30 - 3:30 PM James DeMeo, Ph.D.: *Research Progress Report: Thermal Anomaly in the Orgone Accumulator, and Orgone-Charged Radiation Detectors*

5 minute stretch break

3:35 - 4:45 PM Tom DiFerdinando: *CORE Report, 2008: Analysis of a Small-Scale, Experimental Cloudbusting Operation to End the Drought in the Southeast USA*

5 minute stretch break

4:45 – 5:45 PM Peter Robbins: *Wilhelm Reich and UFOs: A Review, Reappraisal and Update*

5 minute stretch break

5:45 - 6:45 PM **Round-Table Discussion, All Presenters & Audience**

Dinner Break

8:00 PM - 9:30 PM – Optional Evening Events The film *It Can Be Done* will be shown courtesy of producer-director, Jon East. DVD copies can be purchased. Also: Visits to the Orgone Energy Darkroom and Observatory may be possible (weather permitting)

OPTIONAL MONDAY FIELD TRIP TO CRATER LAKE NATIONAL PARK, Aug.3rd

9:00 AM - 7:00 PM

This is an informal event organized outside of the Conference or OBRL, through car-pooling and ride-sharing as people can arrange among themselves. Plan to meet at OBRL in the morning, to work things out. Typically, those who have a car with extra room, and who plan to return back to Ashland or the OBRL Center later in the day, will have seats available to share. It is always informal, and we must see how things develop, but so far nobody has ever been left behind.

ABSTRACT

Acute Armor and the Facade: An Orgone-Energetic Investigation into Psychological Tension

Tom DiFerdinando, Cooper Station, P.O. Box 1621, New York, NY 10276,
daleriever@aol.com, Pain, Injury and Trauma Therapist

Wilhelm Reich, with his groundbreaking bioelectrical experiments, proved that autonomic excitation in the body and the subjective perception of that excitation came together to produce the psychic experience of emotion – of “pleasure” when the excitation moved toward the periphery of the body and “fear” when the same excitation reversed direction and concentrated within the body’s core. For example, in his study of the orgasm function, he discovered that the perception of autonomic swelling and charge in the erogenous zones, its concentration in the genital apparatus and its orgasmic discharge through involuntary contractions of the total body musculature could all, if taken together, account for the full range of emotional and psychosexual arousal and gratification. With his discovery of the biological orgone energy, this core-periphery arrangement of the autonomic nervous system - along with the psychic and somatic expressions that mirrored it – came to be understood as *an expression of orgone energy pulsation itself*. After his discovery of the *cosmic* orgone energy, Reich was further able to identify in the living organism a second type of motion, the biological *spinning wave*. Unlike the radial pulsation of the autonomic nervous system, the spinning wave acted *longitudinally* up the back, over the head and down the front of the organism, helping to explain the genesis of locomotion, embryological development and genitality. Armed with this new understanding of emotional tension, the present author noted that, in addition to physical tension, there also existed a “third” type of tension – one that could not be massaged away, but that could also be released without emotional discharge. It is suggested that this third type of tension is *psychological tension*, a tension related to, but functionally distinct from, physical and emotional tension. To anticipate, the interest here is not “brain tension”; it is *an upper body tension* that *incorporates* the brain as part of a broader process of energy regulation - like “sexual tension” incorporates the genital. It is argued that the production of psychological tension is functionally identical to the production of sexual tension, but simultaneously antithetical to it: where sexual tension becomes highly concentrated, less differentiated and rapidly discharged through *involuntary* muscular convulsions at the body’s narrow “tail end” (genital), psychological tension – or “pre-action” tension – is autonomically concentrated at the much broader *head end* of the organism where, after *absorption and distribution via the spinning wave function*, it is then discharged with a slower, more “measured” and highly differentiated *voluntary* muscular action. It is proposed that the functional relationship between the “broad head” and “concentrated tail” provides the biophysical basis for the functional pairing of love and work. A distinction between acute emotional armor and acute psychological armor will also be considered, along with observations on the “psychic facade” as it relates to psychological tension in the socio-cultural realm.

ABSTRACT

Sahasasia Since 1900: Contemporary Demographic Data on Sexuality, Child-Treatment, Women's Status and Social Freedoms Matches the Cross-Cultural Data, with a note on Modern Islamic Empire and Terrorism

James DeMeo, Ph.D., Director, Orgone Biophysical Research Lab, Ashland, Oregon, USA
<http://www.sahasasia.org> demeo@mind.net

My original *Sahasasia* study from c.1980 produced the first *World Behavior Map* as composed from 1170 different world cultures, identifying regional tendencies towards social violence and warfare, as well as impulses towards child-abuse, sex-repression, slavery and other social factors requiring high levels of social violence for their maintenance. The data were composed of subsistence and village-level or tribal societies reflecting conditions at c.1900AD, which allowed a glimpse back into times prior to the epoch of European colonialism, but not before the epoch of Islamic Imperialism. A world map of these data allowed identification of the social region of *Sahasasia* -- North Africa, Middle East and Central Asia -- as the locus of most extreme *patrist* (patriarchal authoritarian, sex-repressive, child-abusive, violent and warlike) of all world regions. Historical and archaeological analysis allowed a parallel geography-specific analysis and validation of the World Behavior Map, with back-tracking of the original first expansion of the large *patrist* region of Sahasasia to approximately 4000 BCE. The Sahasian behavior patterns were correlated to a similar pattern of massive climate change and desert-formation across the same region, which prompted starvation, famine and mass-migrations -- these appeared as the mechanisms for the first-time widespread development of human armoring and social violence. A larger Sahasian theory on the origins of human violence was thereby developed, which identified an early period of peaceful social conditions in human prehistory prior to the mass-migrations of warrior-nomad peoples abandoning the harsh regions of Sahasasia.

These findings naturally raise questions about how they relate to modern human social conditions, after c.1900 AD. Various lines of evidence strongly suggest the original Sahasian patterns retain a general validity for today, in spite of events following European colonialism. New World cultures of today often, but not always, show an increased intermediate level of *patrist* as compared to the pre-colonial period. However, those inhabiting the borderlands of Sahasia expressed extreme social violence and *patrist* during the 20th Century. Extreme *patrist* violence within Europe and Japan dramatically declined following a peak during the early 20th Century World Wars. Communist totalitarian violence in the Soviet Union and China, and other communist states along the Sahasian borderlands created gigantic death-tolls and restricted movement towards more peaceful conditions, as did Islamic totalitarianism within Sahasia itself. Exceptions are seen in a few isolated islands of less-*patrist* non-Islamic culture, for example in Israel and Lebanon. A new epoch of Sahasian expansionism has re-developed following a slight decline after the break-up of the extreme-*patrist* Ottoman Empire, with exported Islamic social institutions and terrorism.

However, others have argued social violence is today spread more uniform world-wide, and therefore Sahasia has only an historical significance without relevance to modern times. To address this question with more precision, a series of new world maps were consulted or constructed, composed of modern nation-state data on social-sexual-violence variables similar to those used in the original Sahasian study. These maps have not yet been fully integrated to compose a single new *Nation-State* World Behavior Map for the end of the 20th Century, but taken together with historical events after c.1900 do strongly suggest:

- 1) A continued Sahasia-plus-Borderlands distribution for the most extremely *patrist* and violent human cultures, and 2) an increased and more global distribution of *intermediate* *patrist*-*matrist* conditions.

ABSTRACT

Childhood's End: Mende, Hopi, and Trobriand Initiation

Morgaan Sinclair

Lecture Abstract Not Available

ABSTRACT

The Forced Commingling of Musical Cultures in Colonial Latin America; a Reichian Perspective

Eric Gault, Music Director for the Sage Ridge School in Reno, Nevada, for the Lake Tahoe Shakespeare Festival and Reno Baroque Ensemble. Mr. Gault also serves on the faculty of music at Sierra Nevada College. ericgault@hotmail.com

This presentation will focus upon the forced commingling of cultures in Latin America during the colonial period and their concomitant choral/musical output. As more interest is given to the music of Latin America during the colonial period we must be willing to ask pertinent questions regarding culture, society, anthropology and psychology in order to better understand the context in which this music was made. This paper focuses upon the central question of which particular motivating cultural forces were at work during the collision of Spanish and Indigenous cultures during the early 16th century. I will look at this through Reich's ideas of emotional armoring and secondary impulse as the basis for understanding not only the drive to conquer, as with the Spaniards' colonial designs, but also that from which generally patrist (to borrow a term developed by James DeMeo) cultural constructs develop as can be seen in late Aztec religious practices. Finally music from both the Aztec (Mexico) and Inca (Peru) territories will be used to show the effects of the cultural marriage between Spanish and Indigenous peoples. Elements discussed will include rhythmic practice, training, language and intention with regard to the effort to proselytize. Particular focus will be upon Mexico and Peru. As questions of cultural, environmental and human motivation are addressed with regard to musicology during the (Latin American) colonial period we may see that the implication is for a broader musicology.

ABSTRACT

Sexuality and the Functioning of Life

Mary Lou MacIlvaine, Ph.D., Orgone Therapist and AASECT-Certified Sex Therapist
San Diego, California

Email: humanbasics@yahoo.org

www.emotionalcontact.com

www.sextherapysandiego.com

Wilhelm Reich's work began with his observations of libido as an actual energy. In time, following this thread led him to see that the Orgasm Formula is in fact the Life Formula. He discovered the functional unity of the physiological and energetic functions of life and sexuality in the four-beat cycle of tension, charge, discharge and relaxation. Functional thinking lets us recognize the shortcomings of mechanical or mystical misperceptions of reality so we can understand sexuality in the context of how life actually functions. Because life on earth may be threatened, this is important to understand.

Reich used the term **sex economy** to discuss our sexual energy: its origins, its uses and abuses, its potential for health and pleasure, and the health problems that result from its blockage or insufficiency. Our sexual energy and emotional energy are the same as orgone energy. Basic properties of orgone energy are active in human sexuality, including motion, pulsation, attraction, excitement, and superimposition. These same functions are visible microscopically and in the atmosphere and cosmos. Living organisms pulsate as they charge and discharge. Healthy **pulsation** involves expanding and contracting as the parasympathetic and sympathetic nervous systems functions are activated in turn. This rhythm is broken when extended contraction creates chronic anxiety, leading to vicious cycles that undermine sexual functioning. Over-expansion causes analogous problems.

Such pathology is brought about by **emotional armoring**, which can be compared to the dimming of an art gallery. Imagine that some of the paintings on the walls, like some emotions, are troublesome, and so we turn down the lights. Other displayed paintings would be joyful or erotic but are muted by the general dimming. In normal life, sexuality is armored and "dim." Therapy gradually brings emotions and sensations into "full light" so people become more connected to their bodies and can make deep emotional contact with others. In sexuality, this allows more erotic streaming and pleasure. Because minimal breathing and minimal eye contact are common means of emotional armoring, therapy works to improve these functions among others.

Emotional armoring blocks our **energetic contact** with ourselves, others, and nature. Full contact with reality is experienced in our bodies as streaming or vegetative currents, sensations that unite us with all life. Fear of deep contact is the source of our armoring – emotionally, cognitively and sexually. Lack of contact is a defense against being disappointed, overwhelmed, or experiencing the loss of love. People keep a subtle distance even in close relationships. Sexual fantasies impair contact, although they facilitate needed release. As people get healthier, fantasies are eclipsed by the excitement of direct energetic contact.

Reich described **orgastic potency** as the goal of orgone therapy. This is the unarmored capacity for fusing erotic strivings with a loved one and surrendering to the pleasure of full-bodied, involuntary convulsions. However, people can achieve higher levels of contact and pleasure in their lives even without full orgastic potency.

Sex is a primary need like food and housing. Few cultures allow children and adolescents to express their attraction, excitement, and sexuality. Cultures that give primacy to **instinctual needs** tend to be matriarchal. In contrast, highly populated, patriarchal societies tend to serve economic needs, thus setting people up for clashes between their biological needs and their needs to fit in. Relationships become compulsory as people learn not to act on their instinctual needs. Although natural morality is based on respect for life and instinctual needs, compulsory morality distrusts natural processes. Ironically, compulsory morality tortures people into aberrant sexuality.

Children become **sex-negative** initially by fearing punishment for sexual play. Later, they internalize sexual prohibitions. They develop dysfunctional character structures as if to find some way around the roadblocks in their family lives. They learn to make substitute contact, which can be based either on retreating and holding back, or on excessive, affected behavior. Both approaches undermine energetic contact and the gratification of future sexual relationships.

Pleasure anxiety develops from people trying to function *against* their sexual needs. This involves fear or even contempt of pleasure and results in chronic contraction of the autonomic nervous system. What should have been flowing becomes dammed up. Natural needs become distorted into secondary drives – with resulting sexual misery, numbness, or resignation. Pleasure anxiety runs deep. It is in our flesh, our autonomic nervous systems, our brains and our characters. Just having more sex won't solve the problem, although in a loving relationship it can help. Changing our sex-negative culture has to start with raising healthy children.

The **costs** of sexual suppression are immense, consuming both mental energy and muscle energy. The best part of our natures is choked or stamped out. Life becomes cynical, and sex becomes a matter of shame. People lose their capacities for critical thinking and productive work, not to mention satisfying relationships and exciting, pleasurable sex.

Reich understood human sexuality within the larger context of a **unified theory** of the functioning of life. We are complex energy systems but made of the simplest stuff of life, orgone energy, the ubiquitous stuff of living nature. Like orgone energy, we are excitable and drawn toward pleasure, superimposition, charge and discharge. It's the nature of our natures. Honoring the life within our own bodies is a rational starting point for protecting the life of our planet.

ABSTRACT

Personal Experiences with the Orgone Accumulator and Reich Blood Test in a Clinical Practice

Armando Vecchiotti, MSc, Macerata (Italy) <http://www.cellulacancerosa.it> arvec@libero.it

Classic oncology considers the tumour the disease and the cancer cell the only target of the therapeutic intervention. Cancer cell, because of its mechanistic basis, develops and attacks only a *healthy* organism.

According to Reich and Orgonomy medicine, in the hit tissues a series of pathological processes, heralding and preceding the cancer cell formation, are at work.

De facto, cancer process is not explainable only by knowing how cancer cells form, representing its genesis only the first phase of the disease.

Cancer process develops and completes in a second and more important phase, opposite to the previous one.

If at the beginning the damage is locally limited, subsequent death and decomposition of the older cancer cells, forming the tumoral mass, is instead the cause of a generalised cachexia of the whole organism that provokes patient's death.

Natural vesicle reaction of the cells is a fundamental aspect for the formation of the cancer cell, and the various steps of its process are very useful for an early diagnosis.

According to what reported above the following conclusions can be drawn:

1. Cancer cell is not the direct cause of the cancer
2. Cancer cell is the secondary consequence of the natural vesicle reaction of the cells
3. Cancer cell is not the carrier of the disease. It becomes a mortal presence only when, concluded its vital cycle, tumoral mass cells die and start decomposing inside the organism
4. Any therapeutic intervention aimed at killing cancer cells anticipates and worsens the decomposition of the mass. In other words this accelerates the development of the disease
5. Tendency to cancer is an universal fact, even though a true cancer element does not exist. Cancer cell formation depends only on the quality and the quantity of the vesicle reaction to various cancer stimuli.

ABSTRACT

The Orgone Energy Accumulator and Healing by Intention in the Treatment of Cancer in Mice: A Functional Identity - and - Mass-free Orgone Energy and Consciousness

Richard Blasband, M.D., Director, Center for Functional Research,
Tiburon California, <http://www.functionalresearch.org>
CFR@FunctionalResearch.org

A quality of consciousness inherent in most people is the capacity to utilize intention to affect machines such as random event generators. This has been established unequivocally in experiments conducted at the Princeton Engineering Research Laboratories (PEAR) over 25 years of research. There, and at other laboratories, it has been demonstrated that ordinary people can affect the output of random event generators (REG), not only when proximate to the devices, but at distances of thousands of miles, and independent of sidereal time. It has been demonstrated by the author that the expression of human emotions can have many of the same effects. These kinds of anomalous effects cannot be accounted for by the usual laws of electromagnetic radiation (EM).

When intention is greatly magnified, which seems to be the case in those who can use it to heal others, one sees similar anomalous effects, action at a distance and independence of sidereal time. When healing mice with cancerous tumors Bengston showed that a large part of the effect of tumor dissolution came about because of an intense inflammatory reaction. This was similar to the healing effect of the orgone energy accumulator (ORAC) in four experiments with cancer mice. It is reasonable to assume that this reaction is a common functioning principle of treatment using the ORAC and healing by mental intention. That is, there is a functional identity between the two treatment modalities.

The energetic factor in healing is well manifested when water, programmed by a healer, is frozen. This results in large spikes of ice protruding from the surface of the ice cube. This is demonstrated also when the ice cube with the embedded program is thawed and refrozen. The spike appears to be the result of an eruption of energy during the process of freezing. Analysis of the water with a computerized Kirlian photography device, a GDV, shows anomalous changes in density.

A theoretical model, the "M5" model of consciousness, developed by Robert Jahn and Brenda Dunne of the PEAR laboratory provides a way of conceiving of the relationship between mental intention and a domain of what they call "intangible physical reality", which serves as a substrate of physical reality. We suggest that mass-free orgone energy functions at this intangible level where it can communicate with conscious intention through the unconscious mind.

ABSTRACT

On the Effect of a Cosmic Energy on Chemical Systems

Roberto Maglione, MSc, Vercelli, Italy robert_jumper@yahoo.it, and
Diego Serena, BPharm, Vercelli, Italy

The reaction of esterification between an alcohol and an organic acid, as given by the following equation: **acid + alcohol \rightleftharpoons ester + H₂O**

can occur, at low temperatures, only with the presence of a reagent, such as concentrated sulphuric acid and gaseous hydrochloric acid, or a catalyst. Ester formation without reagent or catalyst can still occur at temperatures above 300 °C; while at around 150 °C it occurs after 1-2 days and, at room temperatures, after around 16 years. In addition the reaction, slightly esothermic, is not affected neither by electromagnetic nor by radioactive fields.

Our study was aimed at evaluating the stability of a solution of methyl alcohol and L-glutamic acid (one of the most important neuro-transmitter of the nervous system), at standard conditions and without the presence of any reagent or catalyst, when kept in a Reich orgone accumulator for a given period of time. According to the literature the above chemical system must not react and the molecules of the L-glutamic acid must remain unaltered. At the same time the analysis performed at the High Performance Liquid Chromatography (HPLC), at 230 nm, must give a flat chromatograph output, since both the alcohol and the acid does not absorb in the ultraviolet range, and hence no peaks must be observed at the chromatograph after the HPLC analysis, that otherwise would indicate absorbing characteristics of the system.

The tests started on January 05, 2008 and ended on November 08, of the same year. Two phials of the above solution were prepared for each test. The former was kept in a 5-fold Reich orgone accumulator for a period of time ranging between 2 and 3 weeks, while the latter was kept in the lab of a pharmaceutical company for approximately the same period of time, and considered as control. A total of 16 tests for the orgone-charged solution and 9 tests for the control solution were carried out.

HPLC analysis (by SpectroMonitor 3200 variable wavelength detector, LDC Analytical Inc, Usa) and conductivity measurements (by Conductivity Meter HI 8033, Hanna Instruments, Usa) were performed on both the orgone-charged and control solutions soon after they were removed from their respective locations. Chromatograms of the solution kept inside the orgone accumulator showed the presence, in all the tests, of methyl esters that were not found, but in one case with a very small value of ester relative concentration, in the correspondent control solution. The ester formation could be clearly observed in the chromatographs of the orgone-charged solutions through two main peaks corresponding to 2 min and 3.6 min of retention time (RT). To check the characteristic of the reaction outcomes a comparison with chromatographs, obtained by HPLC analysis on solutions of mono and dimethyl esters of the L-glutamic acid in methanol, was done. In both cases two main peaks at the same RTs were obtained, confirming the mono and dimethyl esters as product of the reaction of the system.

In the following figures HPLC chromatographs related to the tests performed in the months of May-June (figure 1) and July (figure 2) are reported both for the solution kept inside the orgone accumulator (below in the figures) and for the control solution (above in the figures). The two main peaks, corresponding to 2.0 and 3.6 mins of RT and that can be seen on the chromatographs of the orgone-charged solution (below), give the concentration of the mono and dimethyl esters, respectively.

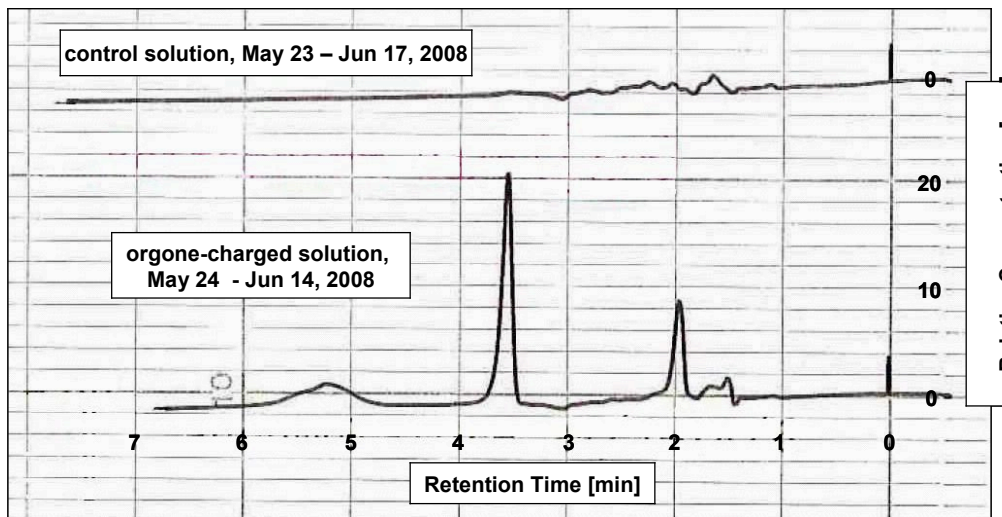


Figure 1 – HPLC chromatographs performed on the orgone-charged (bottom line) and control (top line) solutions related to the test in the period May-June

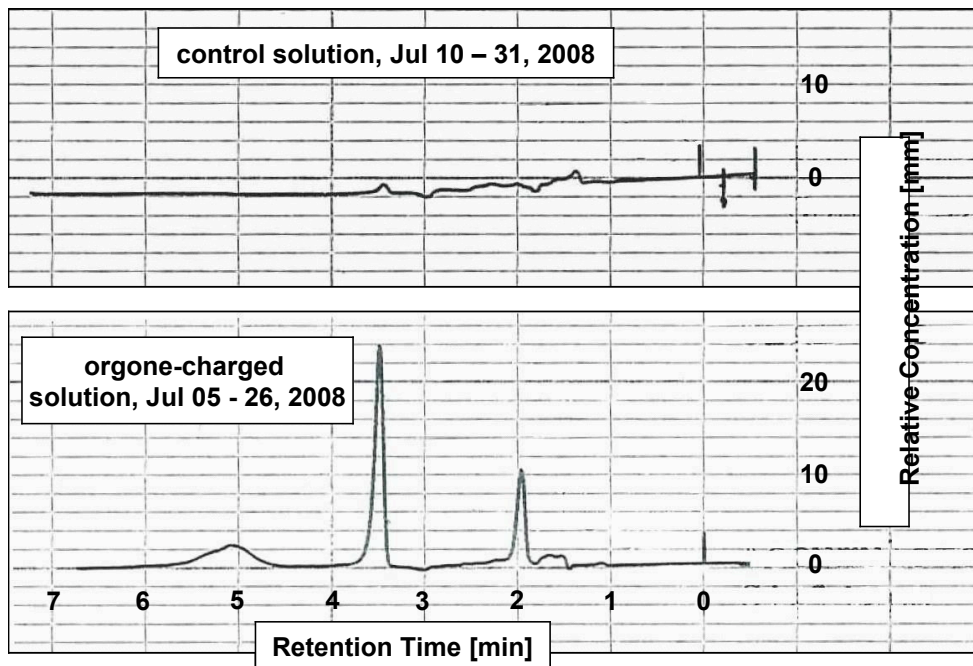


Figure 2 – HPLC chromatographs performed on the orgone-charged (bottom line) and control (top line) solutions related to the July test

Conductivity measurements of the orgone-charged solutions were observed to give lower values than those determined on the control solutions, with a smoother trend versus the testing time, denoting a lower ionic electrolytic dissociation of the compounds of the orgone-charged system.

We can argue from the above results that the formation of methyl esters of the L-glutamic acid in the solution kept inside the Reich orgone accumulator must have occurred under the action of *something* that replaced the traditional reagents and catalysts. It is worth of note that this unknown reagent/catalyst is not related to thermal energy, since the tests were performed at room temperatures, and to any electromagnetic, or radioactive fields, since none of these energies can affect the reaction and that in any case were considered during the tests.

This unknown reagent/catalyst might be identified with the orgone energy that, according to Reich, accumulates inside the orgone accumulator, so as to provide orgone concentration and organomic potentials higher than that on the outside of the apparatus.

The above results highlight the reactivity of the L-glutamic acid in methyl alcohol in experimental lab conditions new to traditional chemistry and never reported in the scientific literature. Stability of the L-glutamic acid should be hence evaluated also on the basis of the presence of orgone energy potentials in case these latter ones are higher than those normally found in lab environments.

The above results may also give a contribution to a better understanding of neurological and mental disorders in human beings. L-glutamic acid plays an important role as neurohumour in the transmission of the nervous impulses through the neurons by the synapse. Since the orgone energy potential in the organism is higher than that of the outside environment, it could be wise to assume that formation of methyl esters may occur even inside the organism as a result of the reaction of L-glutamic acid with methyl alcohol. Methyl esters may act as a barrier and partly or totally deactivate the function of the L-glutamic acid as a transmitter of nervous impulses through the link of the nervous cells, so as to jeopardise the physiology of the whole nervous system.

To a more general extent we might suppose that esters of the L-glutamic acid might also form from other alcohols present in the organism in even higher quantities, such as ethylene or glycerol. However further research efforts should be addressed to this end to confirm this hypothesis.

According to the results of this study, research efforts should be addressed to a better and more general understanding of the reactions between chemical substances available in the human organism after foods, beverages, and drugs intake. Solutions in presence of or reactions occurring with high potentials of orgone energy might produce outcomes much different from those reported in the literature, where different reaction results or no results at all are expected, being orgone energy not considered as a potential reagent/catalyst that might affect the reaction of a chemical system.

ABSTRACT

Research Progress Report: Thermal Anomaly in the Orgone Accumulator, and Orgone-Charged Radiation Detectors

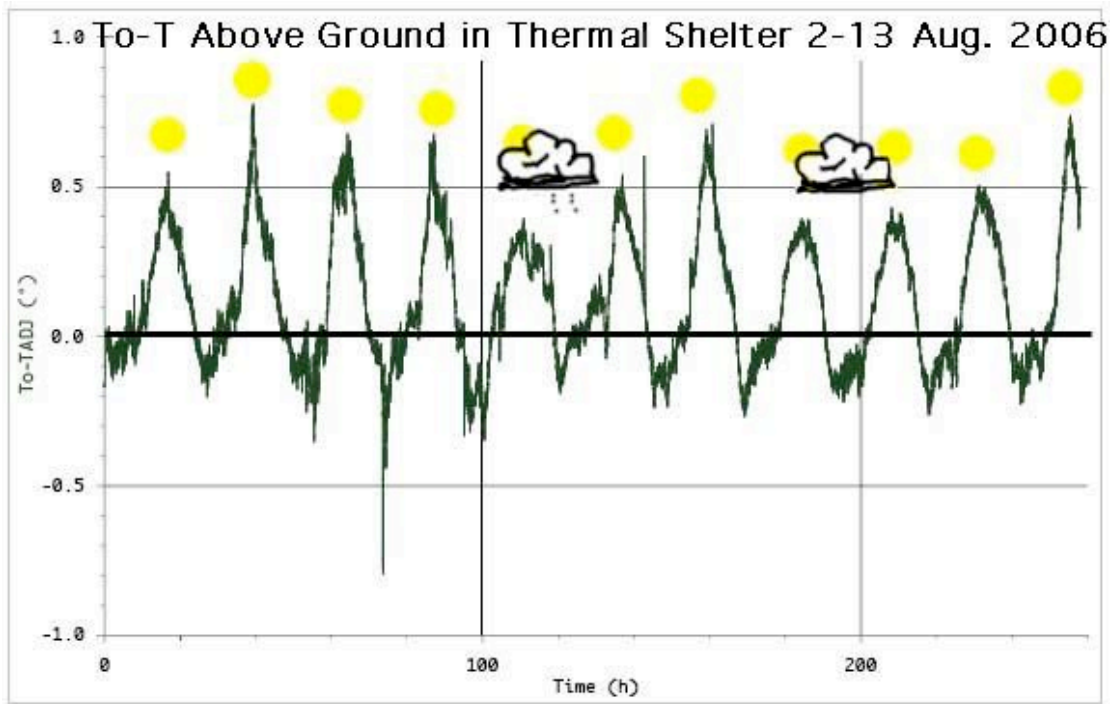
James DeMeo, Ph.D., Director, Orgone Biophysical Research Lab (OBRL), Ashland, Oregon, USA <http://www.orgonelab.org> demeo@mind.net

Since approximately the year 2000, a focused effort has been undertaken at OBRL to develop a precise and tightly controlled replication of Wilhelm Reich's To-T Experiment, which demonstrates a thermal anomaly inside the orgone accumulator -- e.g., that the orgone accumulator, due to its specialized construction, spontaneously creates a slight thermal heating effect inside itself directly from the increased charge of atmospheric orgone energy, without other heat sources involved. To-T measurements have been undertaken around-the-clock over several years at OBRL, using a variety of methods by which to evaluate and rule out the more obvious classical objections to this important experiment. A special thermal shelter under a forest canopy was constructed, inside which were located a thermally-balanced, matched set of accumulator and control enclosures. Tests were run above-ground, underground, and with a separate rotation device until a procedure yielding maximum results was obtained. Background air temperatures near to the two enclosures were also monitored, and multiple shade panels used to obscure unwanted stray light and heat sources from the local environment. Data is recorded to a computer data-logger every minute, and the experimental effort is aimed at covering a full two-year period. Results so far have indicated a pulsatory To-T effect upwards to 0.5° C., peaking at solar noon with minima at solar midnight, but not at the times of peak or minimum daily air temperature (approximately 4 PM and 6 AM) as one might anticipate from classical thermodynamics alone. The effect is maximally strong on crisp and sparkling dry orgone-days, and minimal on cloudy and overcast or rainy days. The effects verify Reich's original views, but with the new pulsatory expression not previously observed or described.

Since summer of 2002, a Ludlum neutron counter has been charging inside the OBRL Orgone Energy Darkroom, in efforts to replicate Wilhelm Reich's observations on anomalous high background counts due to orgone-charging of the partial vacuum within the GM tube. Normally, such a device will yield only around one CPM from natural background radiation, as both high-energy and thermal neutrons are scarce and rare, except when close to very high-energy radiation sources. However, after about one year of charging in the orgone room, anomalous reactions began to appear. By 2006, bursts or streams of several hundred CPM readings were common. At that time, the neutron counter as well as a smaller RadAlert GM counter, were put into continuous operation with monitoring and data recording to computer. Over winter of 2006-2007, upwards of 4000 CPM were routinely recorded on the neutron counter, sometimes lasting over several days, and sometimes with a pulsatory quality similar, but not identical to the above-described To-T measurements.

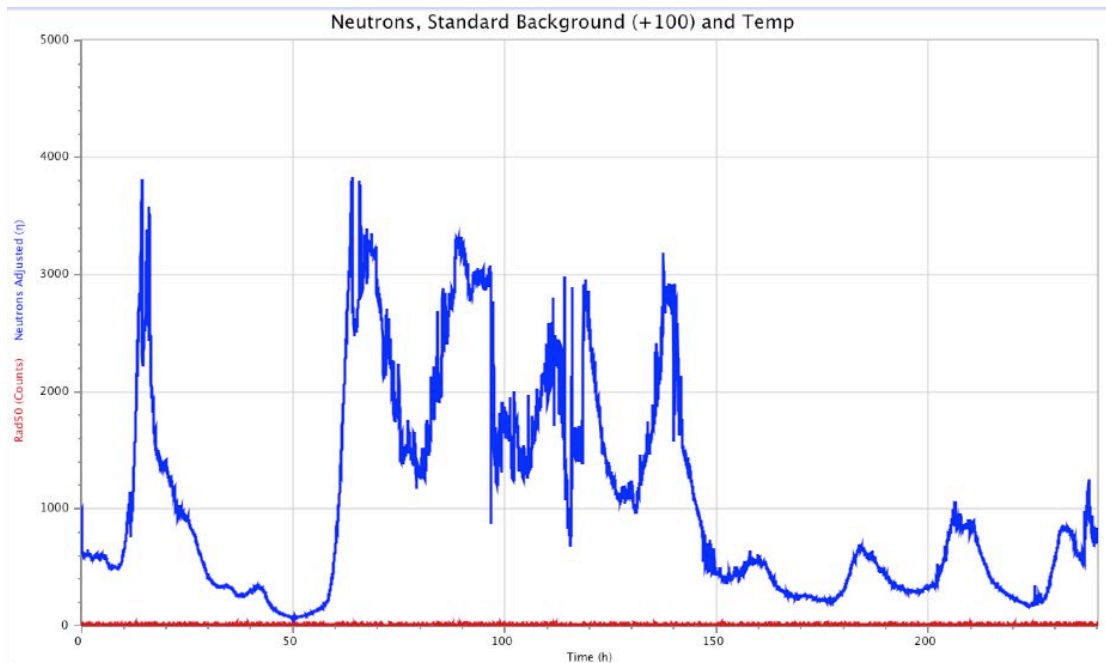
Work continues on these measurements, which provide excellent verification for two of Wilhelm Reich's more controversial and important experiments on the question of atmospheric orgone energy. Both are extreme anomalies to orthodox scientific views on thermodynamics, radiation biophysics and properties of the vacuum.

For more information, see: <http://www.orgonelab.org/Report2006.htm>



To-T Readings: 2-13 August 2006

Peaking out at solar noon, with minima at midnight, reduced effects on cloudy-rainy days.



Neutron CPMs: 4-15 February 2007

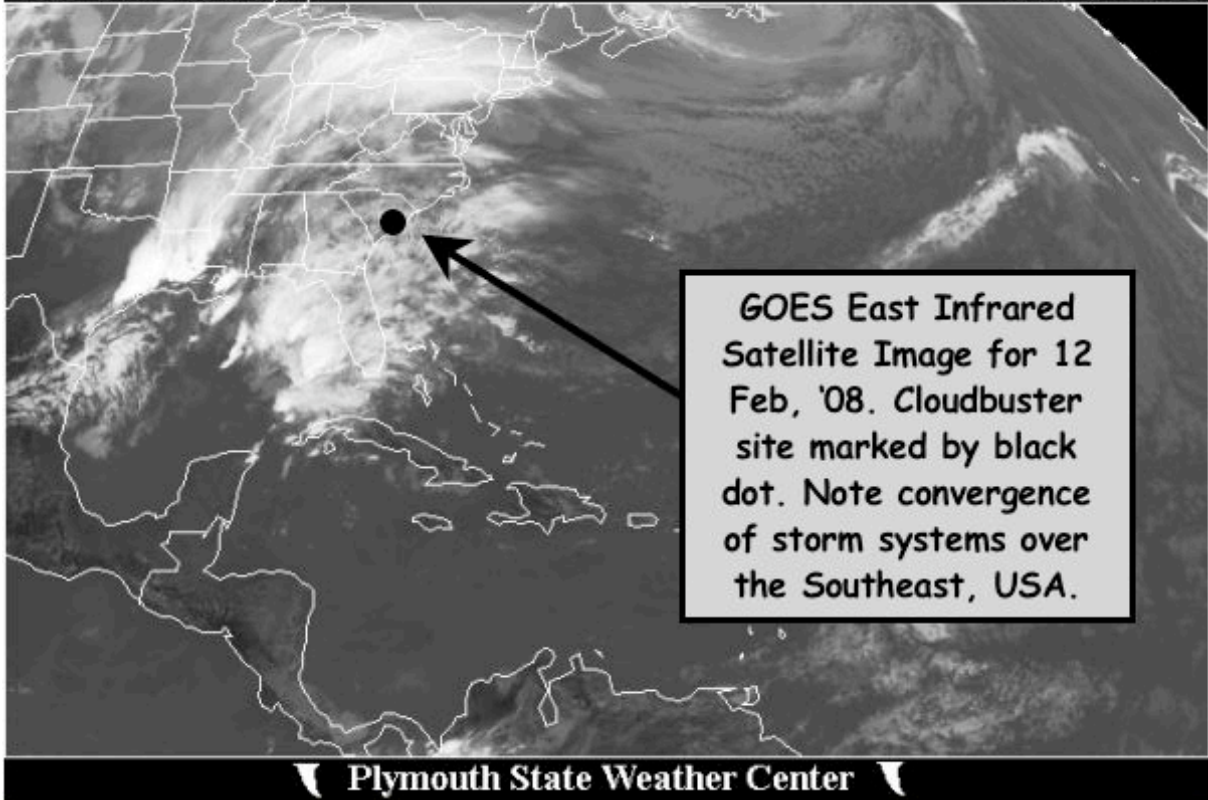
Blue line is orgone-charged neutron counts, soaring up to 4000 CPM. Red line at bottom is standard GM counter, showing reactions only to ordinary background radiation, of 10-20 CPM. Usually, a neutron counter yields about 1 (one) CPM.

ABSTRACT

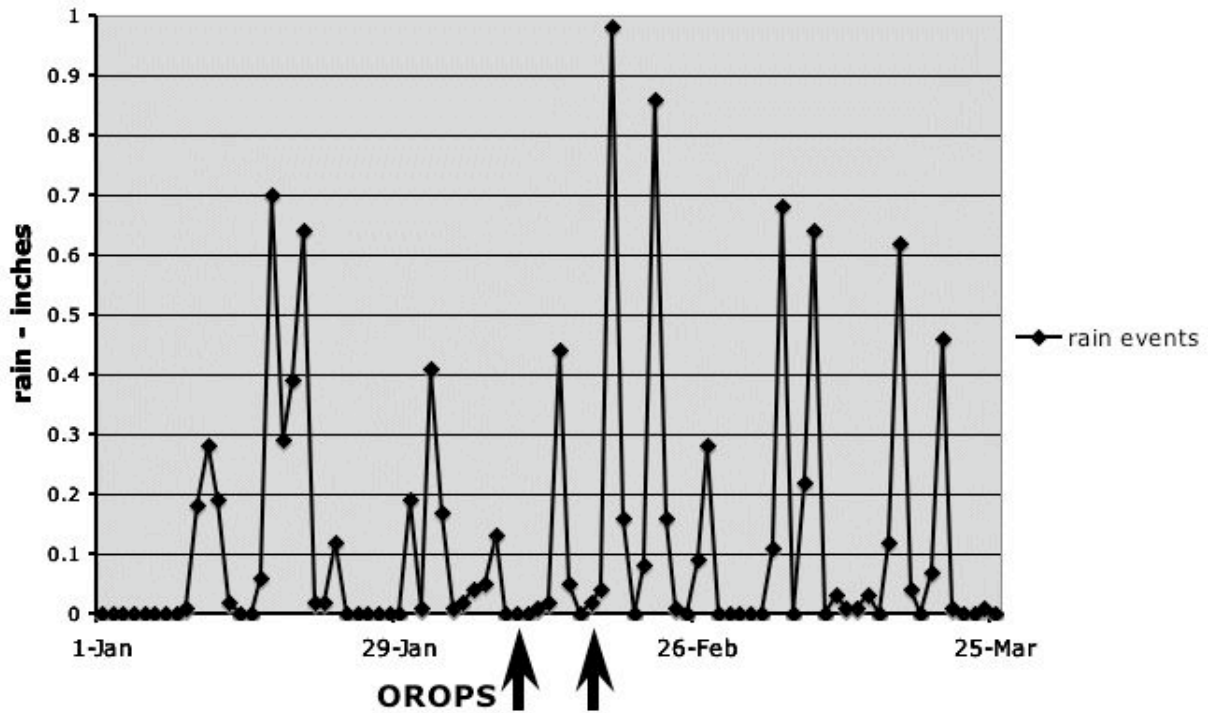
CORE Report, 2008: Analysis of a Small-Scale, Experimental Cloudbusting Operation to End the Drought in the Southeast USA

Tom DiFerdinando, Cooper Station, P.O. Box 1621, New York, NY 10276, daleriever@aol.com, Pain, Injury and Trauma Therapist

Wilhelm Reich, with his discovery of the atmospheric orgone energy continuum, paved the way to a new understanding of atmospheric dynamics and, with it, a practical approach to ending drought and greening deserts. His principle invention in this regard, the Cloudbuster, is a remarkably simple instrument, composed of a passive array of metal pipes grounded in water. He discovered that the atmosphere is regulated by a spontaneous, energetic pulsation and a surging superimposition of moisture-laden energy streams, and that both are highly responsive to the Cloudbuster - the latter capable of acting as either conduit or stimulant to the earth-atmosphere energy economy. He also discovered that the atmospheric orgone can take on an oppressive, hazy and debilitating form that he called DOR, or Deadly Orgone Radiation. DOR, with its dehydrating, suffocating and pulsation-blocking effects, was discovered to play a central role in both the genesis and maintenance of drought and desert. With this body of knowledge and experience in the forefront, a small-scale, experimental cloudbusting operation was conducted outside of North Charleston, SC in February of 2008. Taken as a whole, the region had seen in 2007 its second lowest rainfall totals in over one hundred years and, after a couple of recent and beneficial rains, a decision was made in consultation with Dr. James DeMeo of the Orgone Biophysical Research Lab to initiate an orgone operation (OROP). The southeastern arc of the Appalachian Mountain range was identified as the area likely harboring the “obstacle in the way”. The goal was to encourage energy streams from the southwest and northwest to superimpose over the region and flush out the presumed DOR, permitting the natural atmospheric pulsation to reinstate itself. It will be argued that the operation, designed to maximize a very minimalist set of working conditions, was *partly* successful, the results of the operation consistent with the size of the operation itself. Although it did not end the drought, the operation did put - as reflected by the US Drought Monitor - a considerable crack in the drought, resulting in consistent, weekly improvement over the three months that followed. And while it still took another year for natural rain cycles to fully reinstate themselves, the most serious D4 “exceptional drought” classification, which had been holding tight for ten months, yielded within a month, and the second most serious drought classification, D3 “extreme drought”, nearly ended within two months. Still, the average rainfall across South Carolina in Feb '08 was almost thirty percent higher than it was in January '08, this despite the fact that, climatologically speaking, the entire SE region typically gets less rain in Feb than it does in Jan. While “weather modification” efforts are notoriously difficult to quantify, time and location-specific rainfall and pressure data will be examined as they relate to the cloudbuster’s location and period of operation. (See Figs 1-2)



80 Rain Stations Within 150 Mile Radius of Charleston, SC, Jan 1 -Mar 25, '08



ABSTRACT

Wilhelm Reich and UFOs: A Review, Reappraisal and Update

Peter Robbins, Ithaca, NY <probbinsny@yahoo.com>

Wilhelm Reich's interest in the subject of UFOs dates from 1953, and it quickly accelerated following interaction with a number of UFOs during the experimental stages of his early cloudbusting work in Maine. While his observations, findings, and conclusions concerning these elusive phenomena were methodically set down in his last book, *Contact With Space*, the virulent ridicule then (and now) associated with the subject caused many, even some of those closest to him, to wish that he had never become involved in this area of study. Despite multiply-witnessed UFO sightings and interactions during 1954 CORE operations in Arizona, it was Reich's acceptance of UFOs as a physical reality that dealt his professional reputation its most stunning blow. This talk reviews Dr. Reich's UFO-related work, and the negative impact it had on his career. It then moves on to present evidence that cloudbusting apparatus, based on schematics Reich himself provided the United States Air Force, were actually constructed and deployed in England and in Germany in the 1970s and 1980s, at the least. More, that their irresponsible - or worse - premeditated use, resulted in a record-breaking, "freak storm" which swept through parts of England in October 1987 resulting in profound forest and property destruction. Reich's UFO-related legacy will also be discussed in terms of its place in contemporary UFO studies.